

Operating Instructions

Series BA30000 Welding Hose Reels

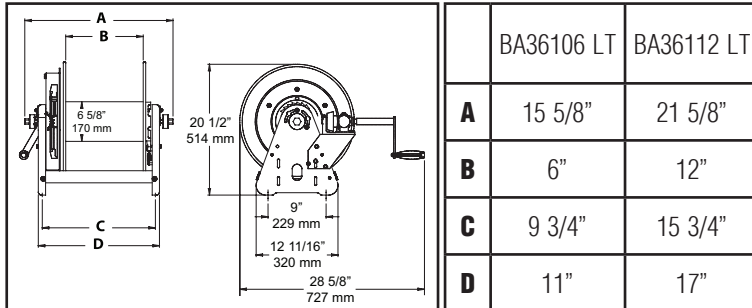
Low Pressure Model Numbers:

[BA36106 LT](#)

[BA36112 LT](#)



Dimensions



Four 1/2" diameter mounting holes

IMPORTANT

Read this manual carefully before installing, operating or servicing this equipment.

SAFETY

Personal injury and/or equipment damage may result if proper safety precautions are not observed.

- Ensure that reel is properly installed before connecting input and output hoses.
- Bleed fluid/gas pressure from system before servicing reel.
- Before connecting reel to supply line, ensure that pressure does not exceed maximum working pressure rating of reel.
- Remember, even low pressure is very dangerous and can cause personal injury or death.
- Be aware of machinery and personnel in work area.
- If a leak occurs in the hose or reel, remove system pressure immediately.
- A high tension spring assembly is contained within the reel. Exercise extreme caution.
- Pull hose from reel by grasping the hose itself, not the control valve.
- Ensure that reel, hose, and equipment being serviced are properly grounded. Use an ohmmeter to check ground continuity.
- If reel ceases to unwind or rewind, remove system pressure immediately. Do not pull or jerk on hose!
- Treat and respect the hose reel as any other piece of machinery, observing all common safety practices.

IN-SERVICE CAUTION:

- The user is cautioned not to shut off the fuel gas at the regulator or supply source first, as a flashback may result, and thereby damage the hose.
- Users are cautioned specifically to shut off the gas at the torch first, and then at the regulator or supply source, to limit permeation of gas through the hose wall. This should be done when the torch will not be used for periods in excess of 30 minutes.
- After the flame has been extinguished and the gas turned off at the supply source, it is recommended that any remaining gas be bled to minimize degradation of the rubber during long shutdowns.
- To prevent an accumulation or concentration of gas that could be explosive or otherwise harmful to personnel, adequate ventilation must be provided at all times, particularly in confined areas where fuel gas is being used.
- Additional advice for minimizing the permeation problem has been supplied by an NWSA member who states "The source of gas (fuel gas and oxygen) should be closed before leaving for the day or shift. After the cylinder or manifold valves have been closed, the torch valves (both fuel gas and oxygen) should be opened to remove all pressure from hoses.

Form# 834-696E Rev: 2/2026

INSTALLATION INSTRUCTIONS

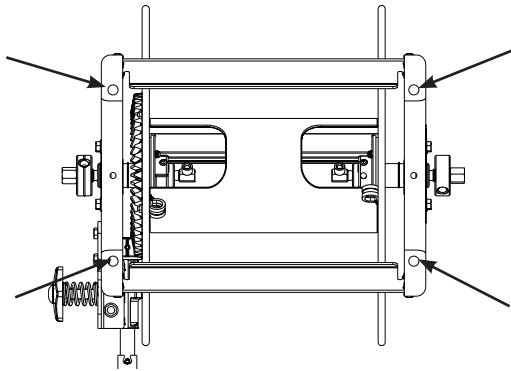
Inspection

Unpack and inspect the reel for damage. Turn the reel by hand to check for smooth operation. Check for completeness.

Mounting of all hose reels

NOTE: Ensure that mounting surface is flat to prevent binding on reel after it is mounted.

1. Two 1/2" diameter mounting holes are located at the base of each side support panel (2 each). Mount reel using four (customer supplied) bolts; tightening them securely to ensure a solid, rigid attachment.



2. Perform the following steps only after all other installation steps, pertaining to your particular reel, are accomplished.

NOTE: A flexible hose connection must be used to compensate for any offset between the supply line and the reel swivel.

3. Apply thread compound to all threads.
4. Thread male connector of supply line into swivel. Tighten securely.

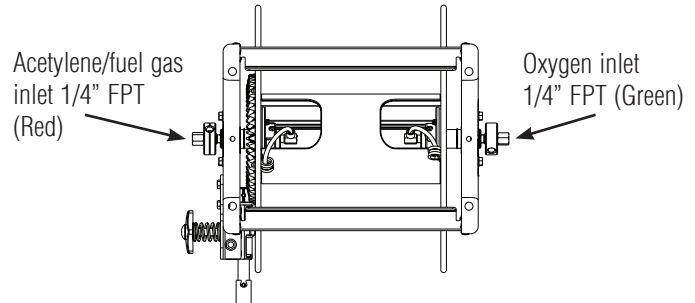
Connecting the hose

CAUTION: Do not connect the hose to the fluid path until after hose reel has been installed. Fully extend and pressurize hose before winding on to reel. Momentarily open control valve, when initially pressurizing, to purge hose of gases. When fluid appears at control valve, close valve. This prevents flattening of the hose and excessive pressure on the drum when fluid supply is reinitialized at a later time.

1. Apply thread compound to all threads.
2. Hand thread male hose connector into fluid path.
3. Using a wrench, firmly hold onto fluid path while tightening hose connector.

Installing input hoses

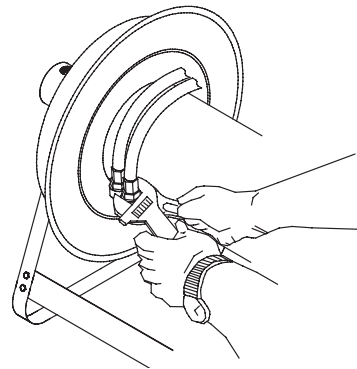
Caution: Apply teflon tape to all input connections to insure a proper seal.



SERVICE INSTRUCTIONS

Replacing the hose

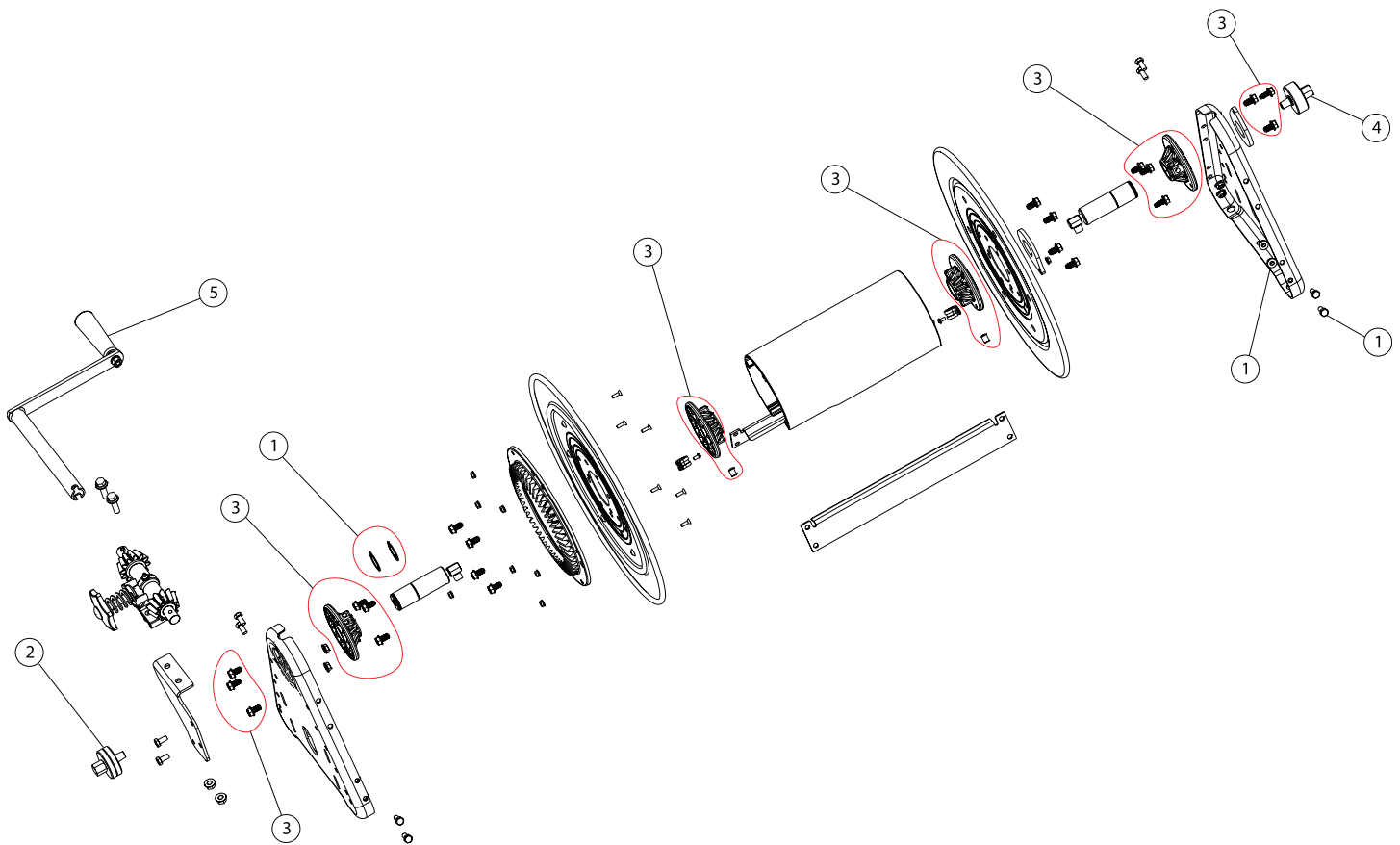
1. Using a wrench, firmly hold onto the fluid path while removing hose connector.
2. Follow procedures for "Connecting the hose" (refer to installation instructions).



Replacing the swivel

CAUTION: Remove supply line pressure before performing the following procedure.

1. Remove supply line from swivel.
2. Remove swivel assembly from fluid path.
3. Install swivel assembly to fluid path by reversing steps 1 and 2. Apply thread compound to all threads.



Service Kits - General

ITEM	DESCRIPTION	QTY.	PART #
1	HARDWARE KIT	1	S602948
	SCREW 5/16-18 x 5/8"	8	
	LOCK NUT 5/16-18	8	
	SNAP RING 1-1/4"	2	
2	SWIVEL ACCT KIT	1	S600256-1
3	HUB KIT	2	S602950
	NYLON HUB	4	
	SELF TAPPING SCREW 5/16-18 x 5/8"	12	
	SET SCREW 3/8-16 x 1/2 STEEL	1	
4	OXY SWIVEL KIT	1	S600257-1
5	HANDLE KIT	1	S390838-10-35
	CRANK HANDLE ASSEMBLY	1	